

Waters of **LIFE**

Waters of LIFE Advisor training

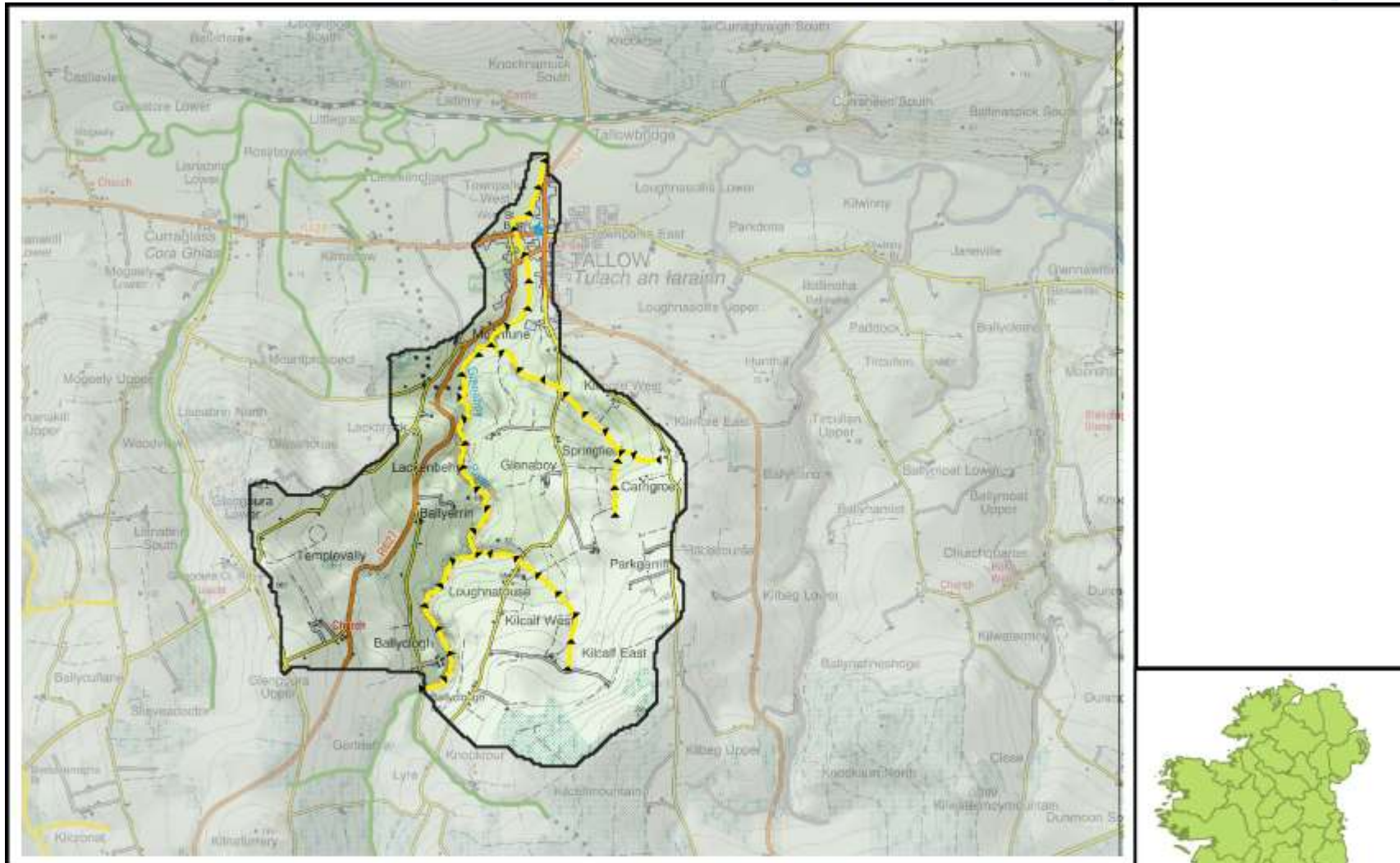
Module 3 - Pollution Impact Potential (PIP), Flow Paths,
Delivery Points

January 2025



An Roinn Tithíochta,
Rialtais Áitiúil agus Oidhreachta
Department of Housing,
Local Government and Heritage

Pollution Impact Potential (PIP) maps



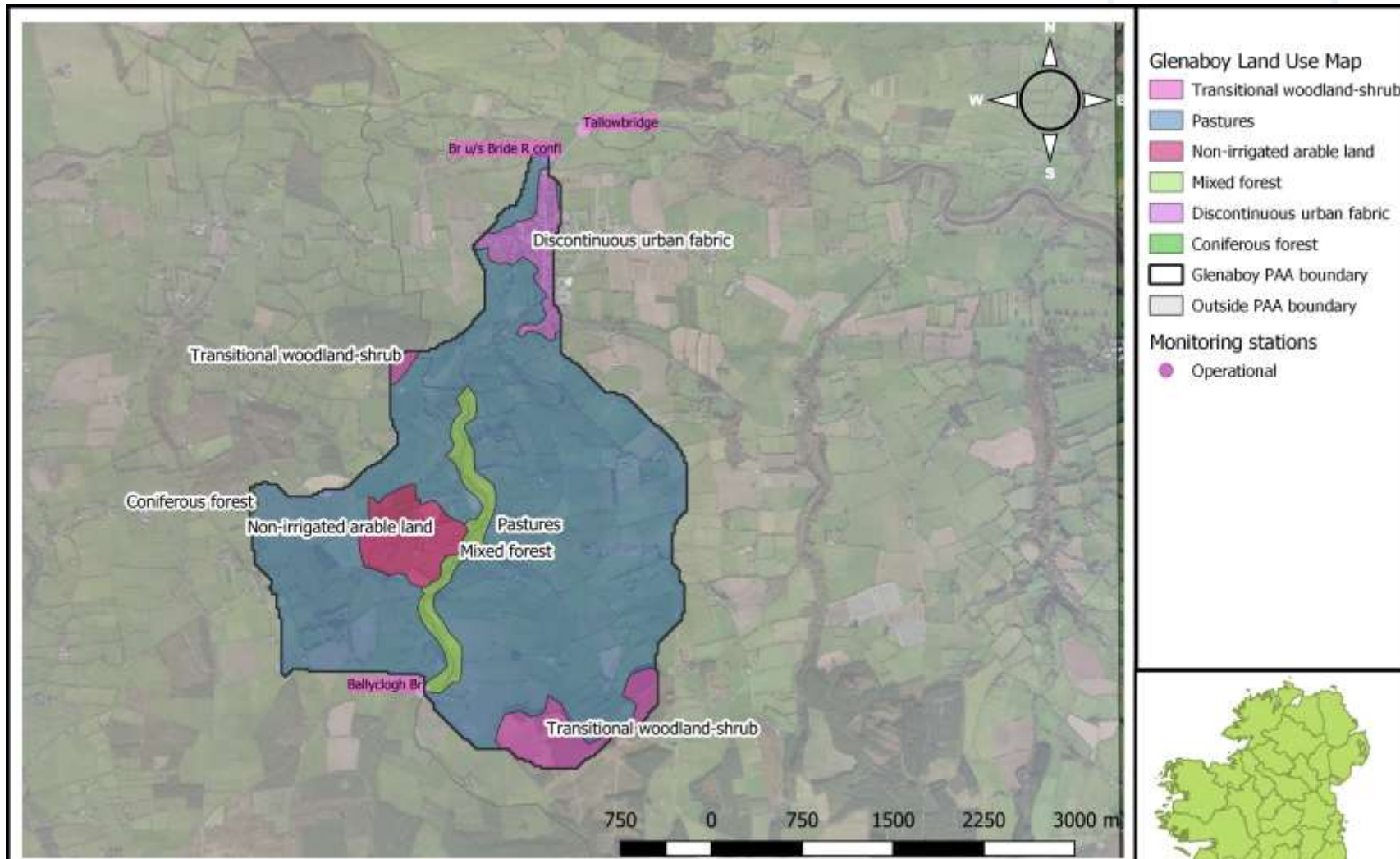
Drawn by: Philip Murphy
Checked by: Draft Map
Date: 30-10-2020

Glenaboy PAA



An Roinn Tithíochta,
Rialtais Aitiúil agus Oidhreacht
Department of Housing,
Local Government and Heritage

Pollution Impact Potential (PIP) maps



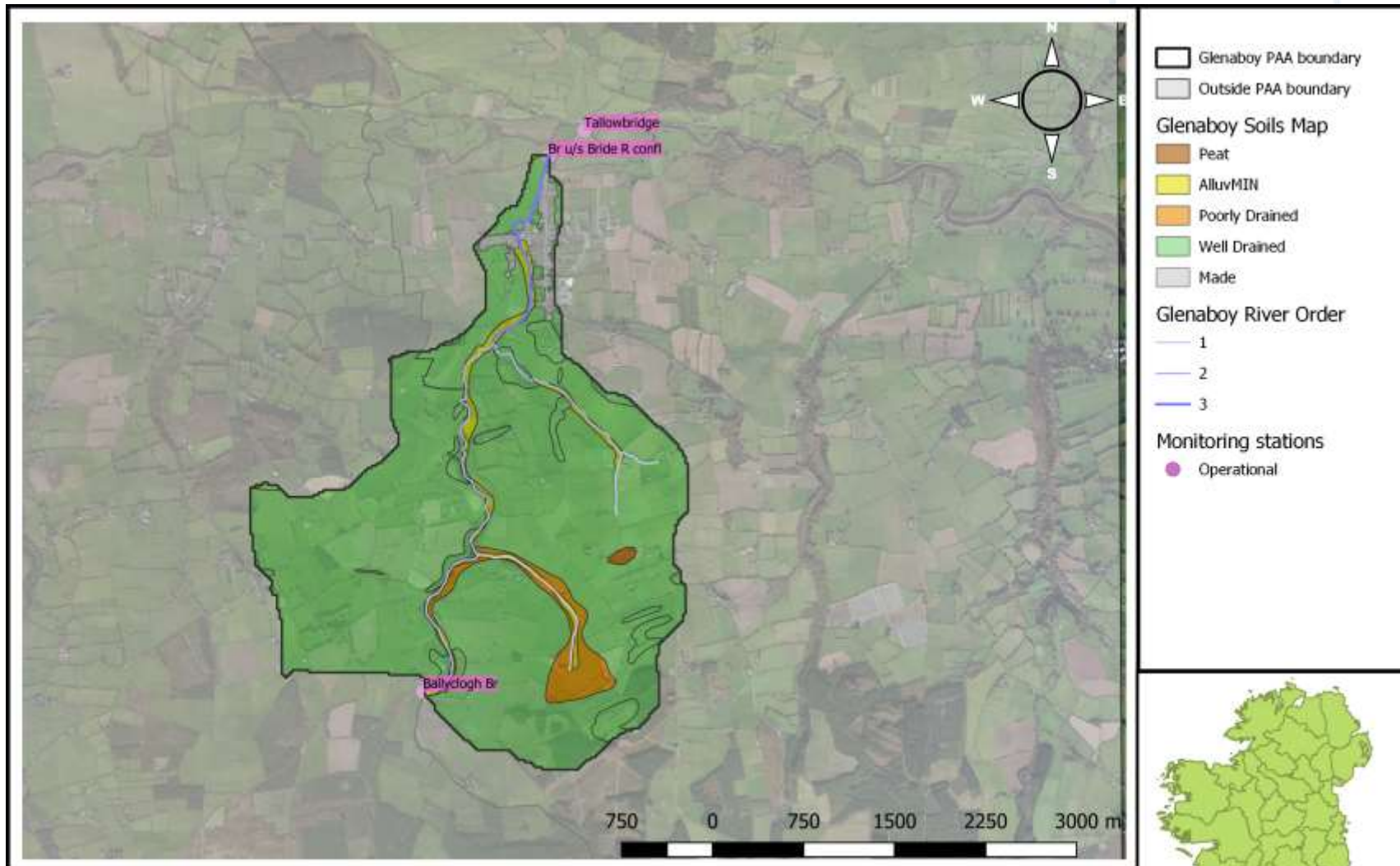
Drawn by: Philip Murphy
 Checked by: Draft Map
 Date: 03-11-2020

Glenaboy PAA



An Roinn Tithíochta,
 Rialtais Aitiúil agus Oidhreachta
 Department of Housing,
 Local Government and Heritage

Pollution Impact Potential (PIP) maps

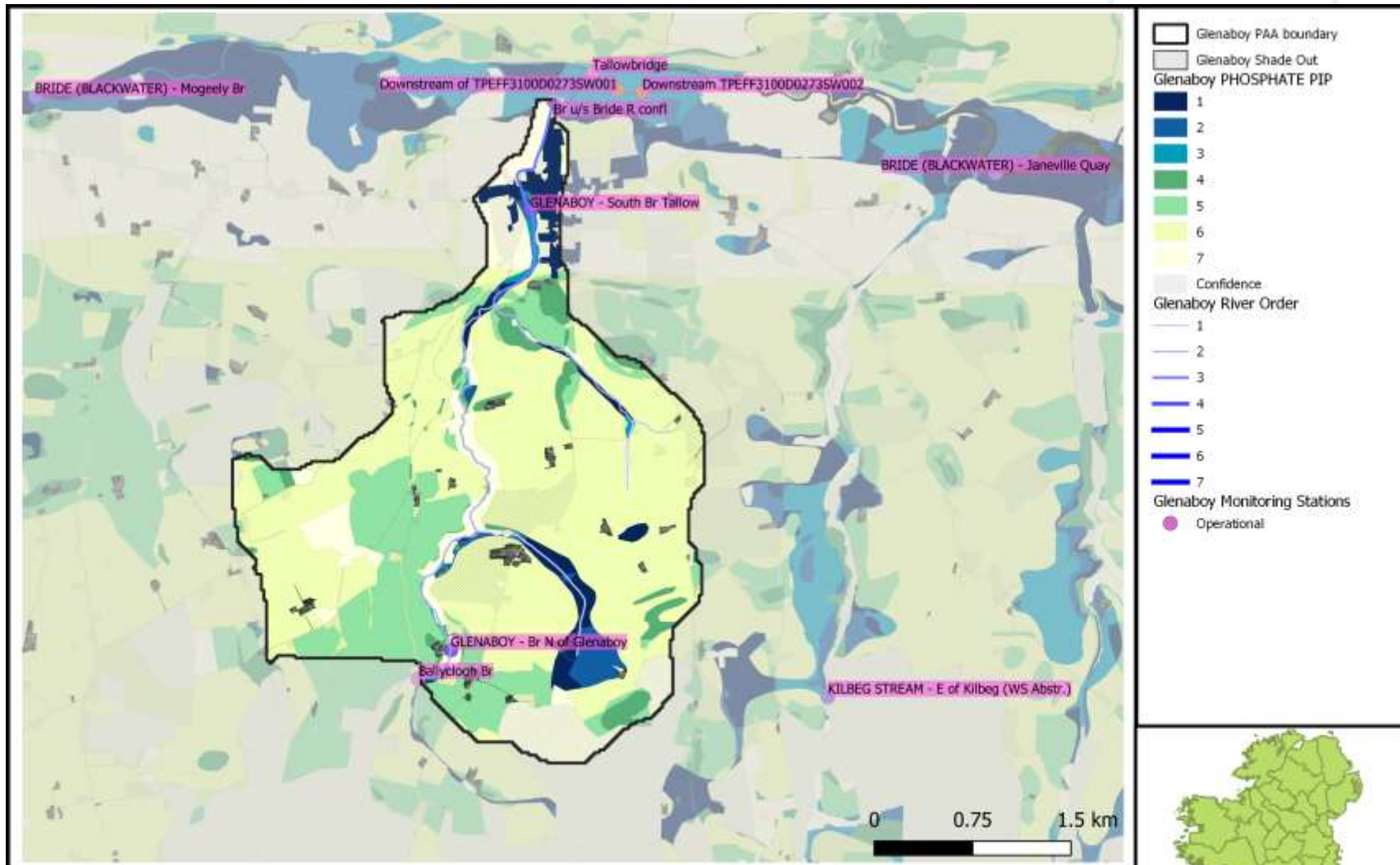


Drawn by: Philip Murphy
Checked by: Draft Map
Date: 03-11-2020

Glenaboy PAA



Pollution Impact Potential (PIP) maps



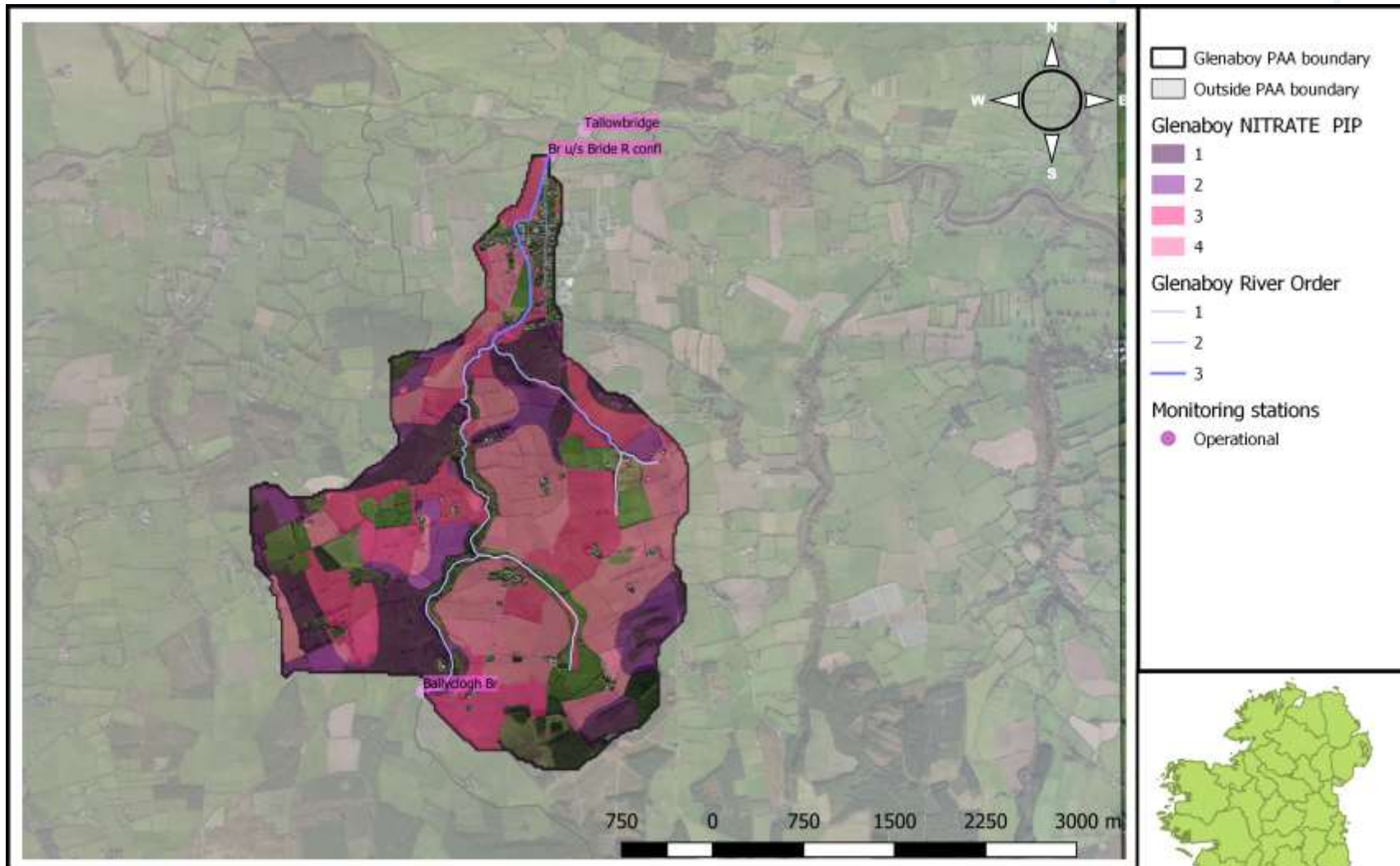
Drawn by: Philip Murphy
 Checked by: Ruth Hennessy
 Date: 15-03-2021

Glenaboy PAA



An Roinn Tithíochta,
 Rialtais Aitiúil agus Oidhreachta
 Department of Housing,
 Local Government and Heritage

Pollution Impact Potential (PIP) maps

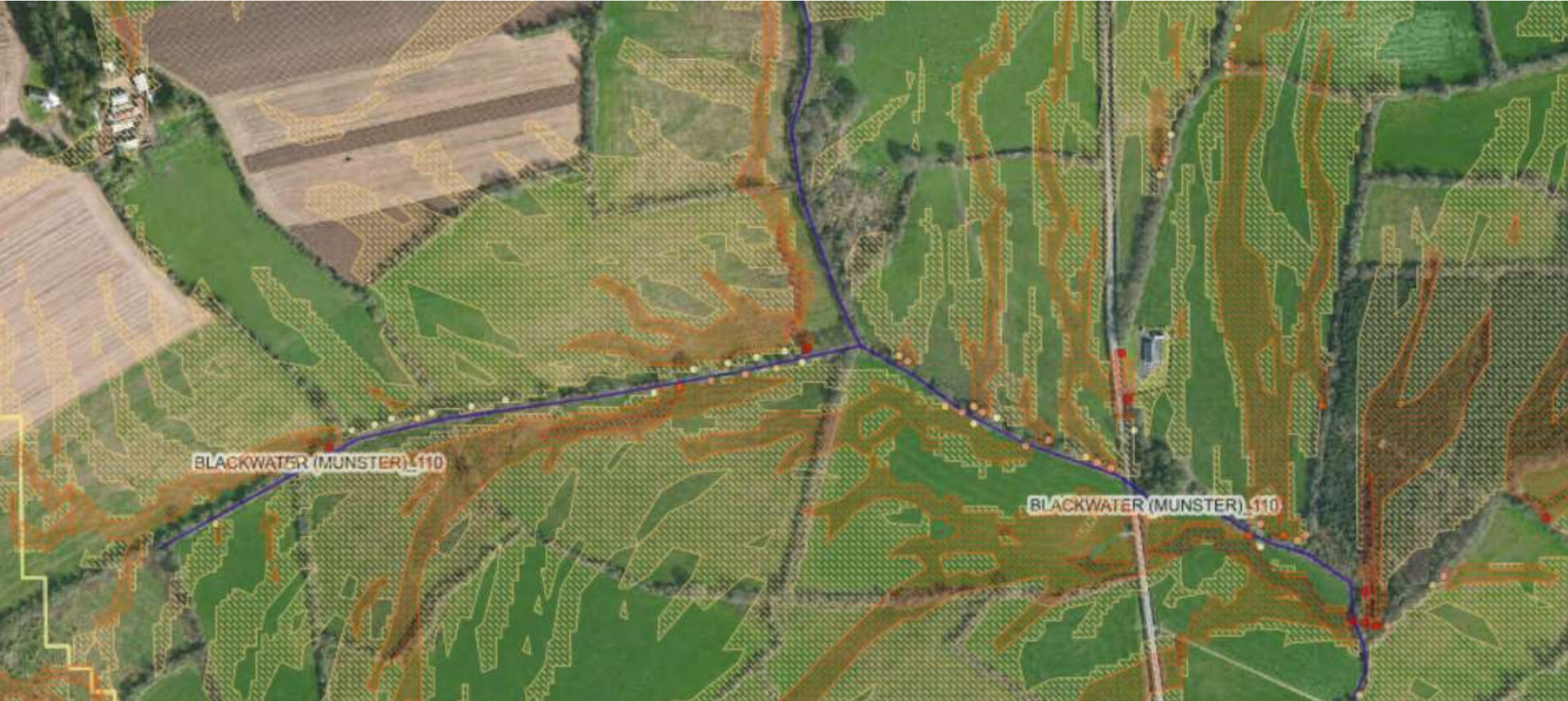
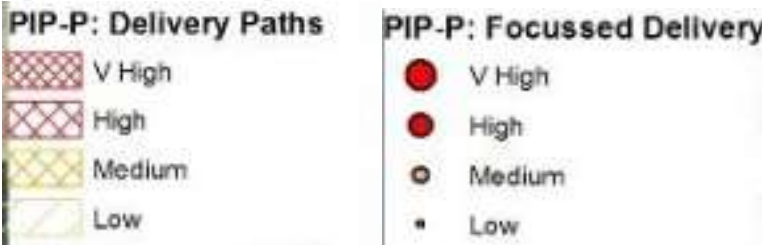


Drawn by: Philip Murphy
Checked by: Draft Map
Date: 03-11-2020

Glenaboy PAA



Pollution Impact Potential (PIP) maps



Exercise - Maps

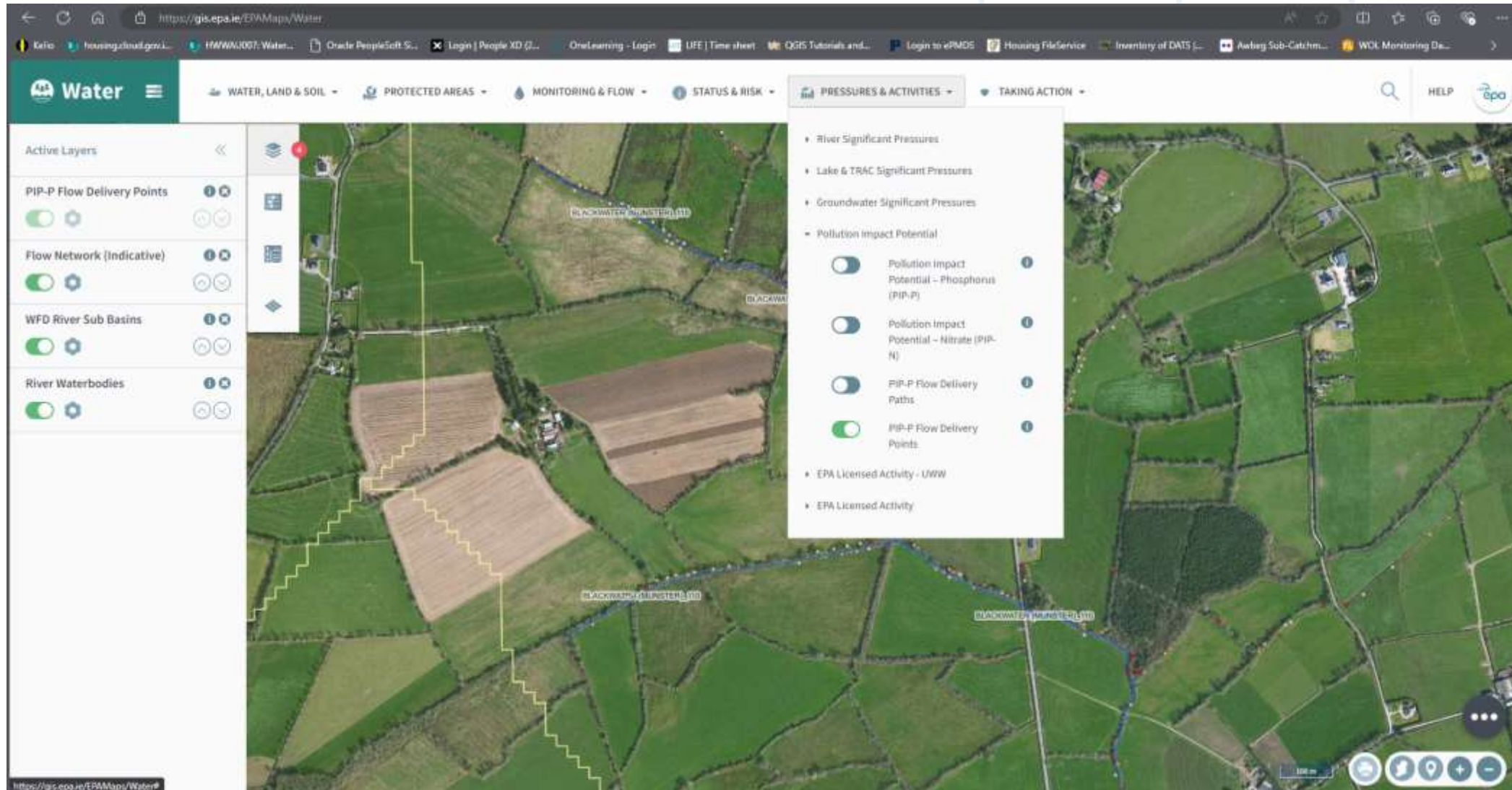
Focusing on the most common significant issues



- **What do the colours indicate?**
- **What does this tell you about the landscape?**
- **What issue would you expect in the waterbody?**



Pollution Impact Potential (PIP) maps



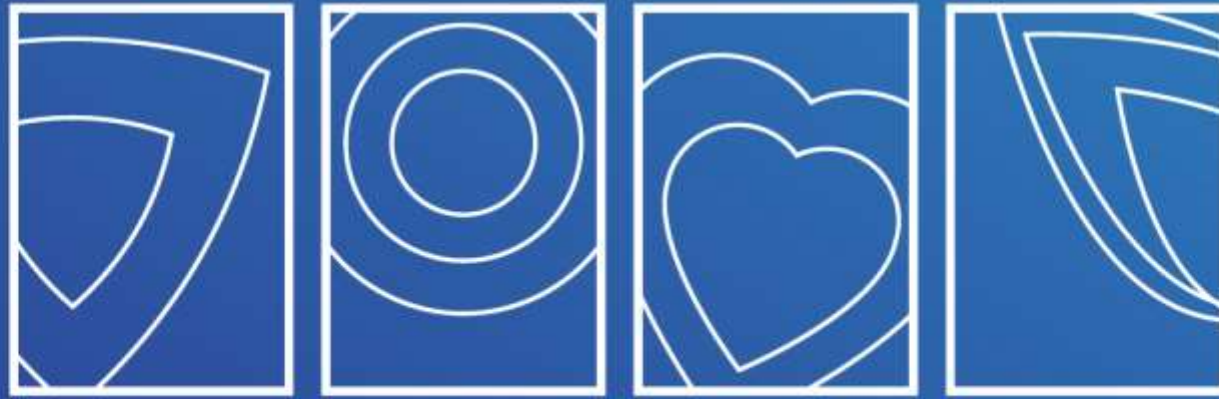
Key Takeaways

Focusing on the most common significant issues



- **Layers will be available on Waters of LIFE app**
- **Remember: The pathway and source is often verified by the advisor or practitioner on the ground**





protect **restore** **respect** **sustain**